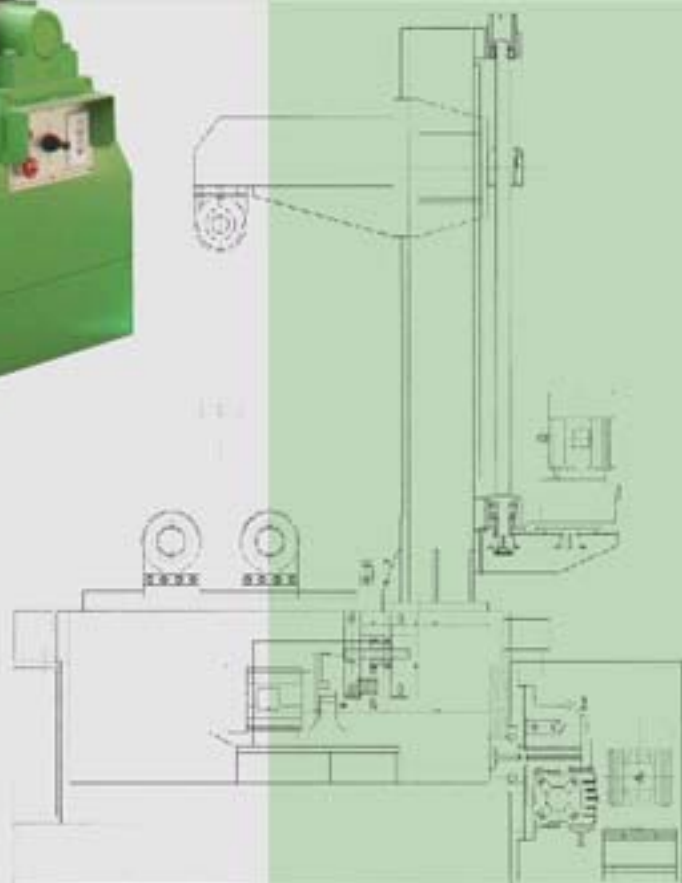


# ROTATOR<WM형>

## ROTATOR(600A/1000A)

### ■ ROTATOR(600A / 1000A)

ITEM	SPECIFICATION	NOTE
LOAD PIPE	50A~600A / 65A~1000A	
제품중량	2800kg / 2900kg	
ROLL SIZE	Ø180×280L / Ø180×250L	
PIPE TURING SPEED	0~1200mm/min	인버터 조정
TILTING	±50°	
CONTROL SYSTEM	MAIN P/L & 조작S/W	
좌 · 우 이송	1.5kw & 130형×1/800	삼양 (주문형)
상 · 하 이송	1.5kw×1/20 & 랙(100형)	삼양
PIPE TURING	1.5kw×1/41	원회전형
MACHINE DIMENSION	W600×L1900×H2450 W600×L2040×H2650	

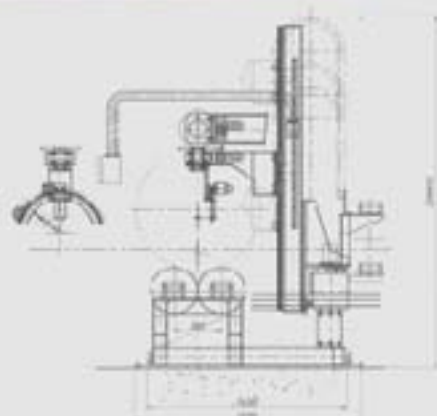
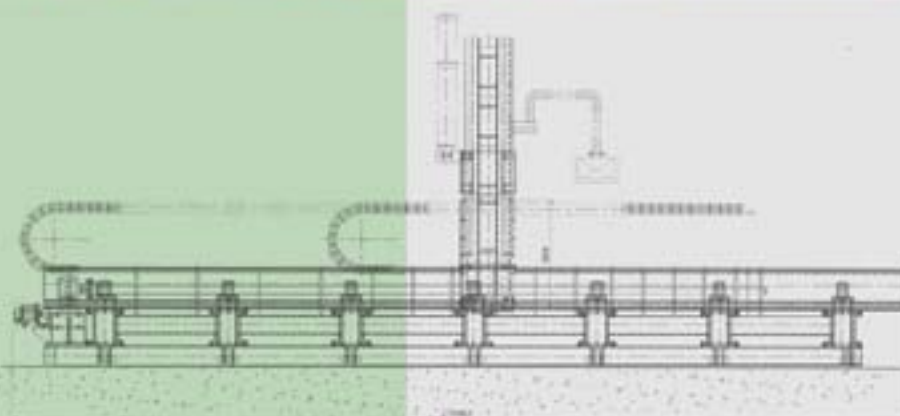


# COASTER

## CPC600-004N

### ■ COASTER (PIPE CNC COASTER)

ITEM	SPECIFICATION
LOAD PIPE	80A~600A
절단작업길이	MAX 6000L
CUTTING PROCESS	OXYGEN & PLASMA
NC SYSTEM	4-AXIS 동시제어
축구성 (4-AXIS)	X-AXIS(TORCH BEVELLING $\pm 45^\circ$ )
	Y-AXIS(TORCH BEVELLING $\pm 45^\circ$ )
	Z-AXIS(TORCH LONGITUDINAL DRIVING)
	C-AXIS(PIPE ROTATION)
절단전용 PROGRAM 내장	CAD TYPE(최종)
PIPE ROTATION TYPE	TURNING ROLL TYPE
DRIVING	AC SERVO MOTOR
TURNING ROLLER DIA	$\varnothing 375$
PANEL	OP & LOCAL PANEL
POWER SOURCE	220V $\times$ 3P $\times$ 60Hz
TOTAL ELECTRIC POWER	5kw
MACHINE DIMENSION	W1650 $\times$ L7250 $\times$ H2750



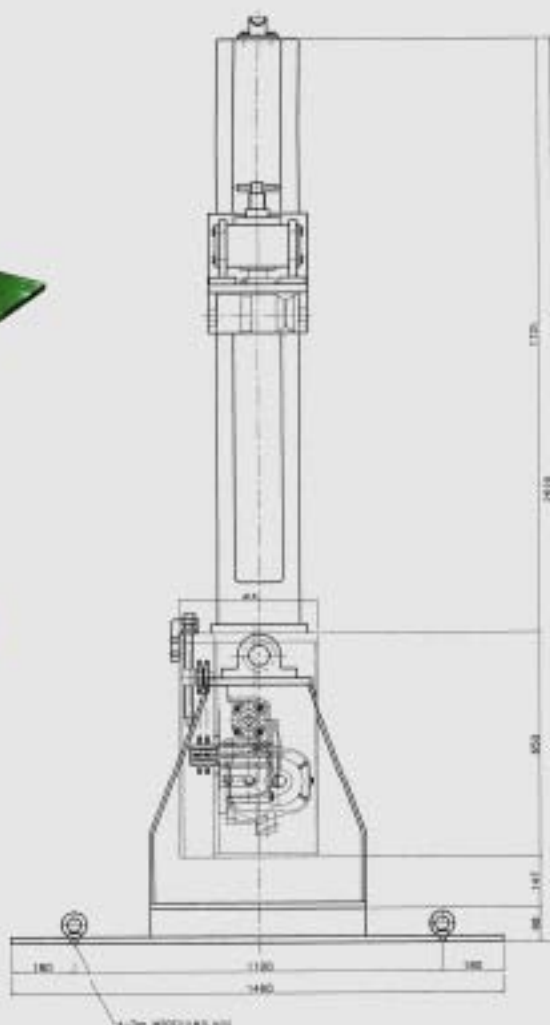
# ROTATOR

## ROTATOR(600A/1000A)



### ■ ROTATOR(600A / 1000A)

ITEM	SPECIFICATION	NOTE
LOAD PIPE	50A~600A / 65A~1000A	
제품중량	2700kg / 2800kg	
ROLL SIZE	Ø128×210L / Ø138×240L	
PIPE TURNING SPEED	0~1200mm/min	인버터 조정
TILTING	±50°	
CONTROL SYSTEM	MAIN P/L & 조작S/W	
좌 · 우 이송	1.5kw×1/20 & 감속기(130형)	삼양 & 삼화주문형
상 · 하 이송	1.5kw×1/20	삼양
PIPE TURNING	1.5kw×1/20 & 감속기(100형)	삼양
MACHINE DIMENSION	W1450×L1600×H2380 / W1460×L1800×H2620	



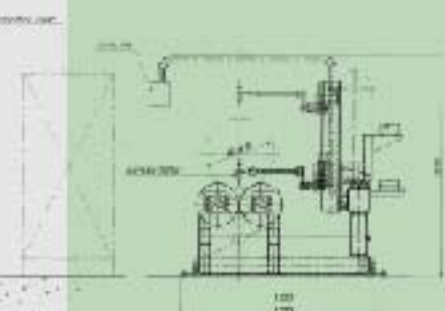
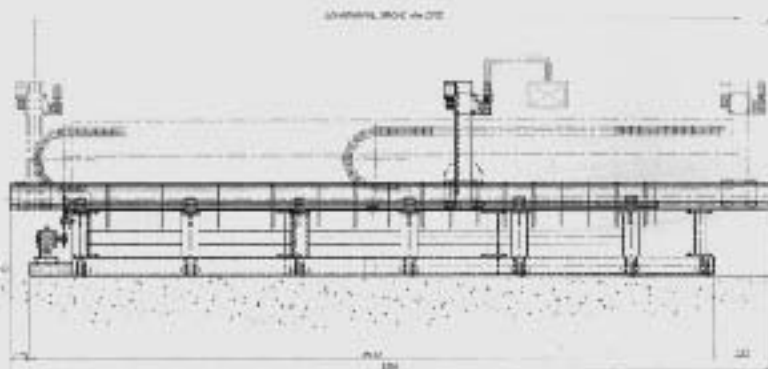


# COASTER

## CPC600-003N

### ■ COASTER (PIPE CNC COASTER)

ITEM	SPECIFICATION
LOAD PIPE	80A~600A
절단적용길이	MAX 6000L
CUTTING PROCESS	OXYGEN & PLASMA
NC SYSTEM	3-AXIS 동시제어
축구성 (3-AXIS)	X-AXIS(TORCH BEVELLING $\pm 45^\circ$ )
	Z-AXIS(TORCH LONGITUDINAL DRIVING)
	C-AXIS(PIPE ROTATION)
절단전용 PROGRAM 내장	CAD TYPE(적용)
PIPE ROTATION TYPE	TURNING ROLL TYPE
DRIVING	AC SERVO MOTOR
TURNING ROLLER DIA	$\phi 375$
PANEL	OP & LOCAL PANEL
POWER SOURCE	220V $\times$ 3P $\times$ 60Hz
TOTAL ELECTRIC POWER	5kw
MACHINE DIMENSION	W1380 $\times$ L7200 $\times$ H2000



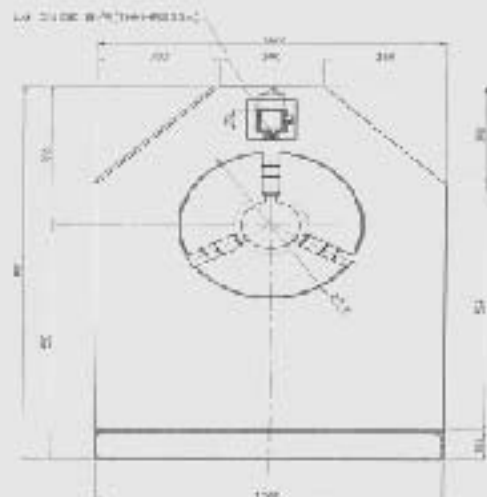
# COASTER

## CPC350-002N



### ■COASTER(PIPE 지관용 2축 COASTER)

ITEM	SPECIFICATION
LOAD PIPE	50A~350A
절단적용길이	단관 지관용 MAX : 1000L
CUTTING PROCESS	OXYGEN & PLASMA
NC SYSTEM	2-AXIS 동시제어
축구성(2-AXIS)	Z-AXIS(TORCH LONGITUDINAL DRIVING) C-AXIS(PIPE ROTATION)
절단전용 PROGRAM 내장	CAD 전용프로그램 TYPE(적용)
PIPE ROTATION TYPE	TURNING ROLL TYPE
TORCH BEVELLING	수동식 조정
DRIVING	AC SERVO-MOTOR
장비 프로그램 제어	일반컴퓨터제어 / LCD모니터10.4"
POWER SOURCE	220V×3P×60Hz (3kw/h)
MACHINE DIMENSION	W1000×L2000×H1350





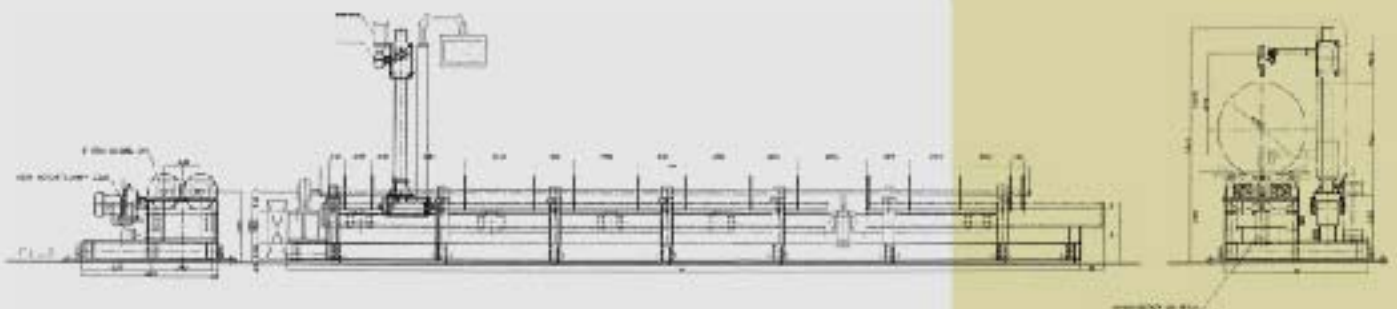
# PIPE GAS CUTTING M/C

## NS-800UD



■ PIPE GAS CUTTING M/C  
MODEL : NS-800UD

ITEM	SPECIFICATION	
	NS-800UD(업다운장치)	
LOAD PIPE	80A~800A (6000L)	
CUTTING PROCESS	OXYGEN & PLASMA	
토치이송 TYPE	주행(수동식 조정) 상하(전동 수동식)	
PIPE ROTATION TYPE	POLLER TURNING 인버터 조정	
PIPE UP-DOWN	있음	AIR CYLINDER TYPE



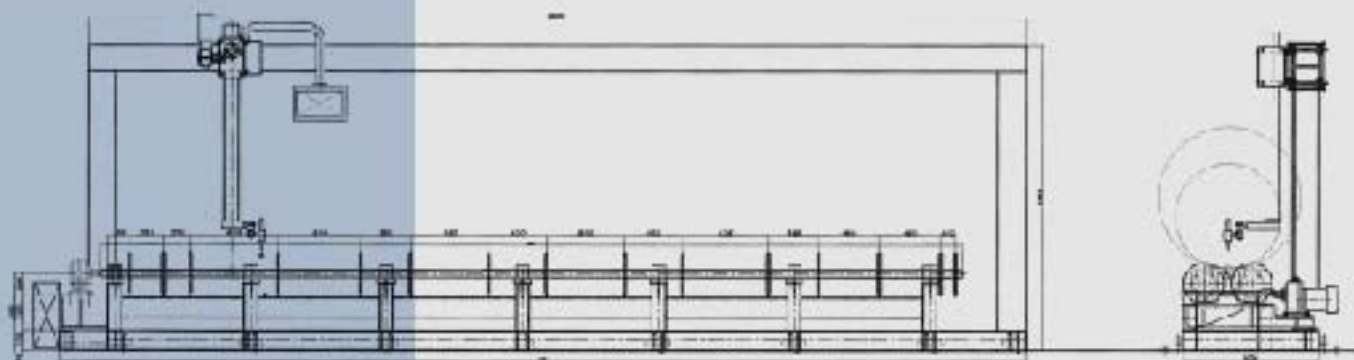
# PIPE GAS CUTTING M/C

## NS-800C

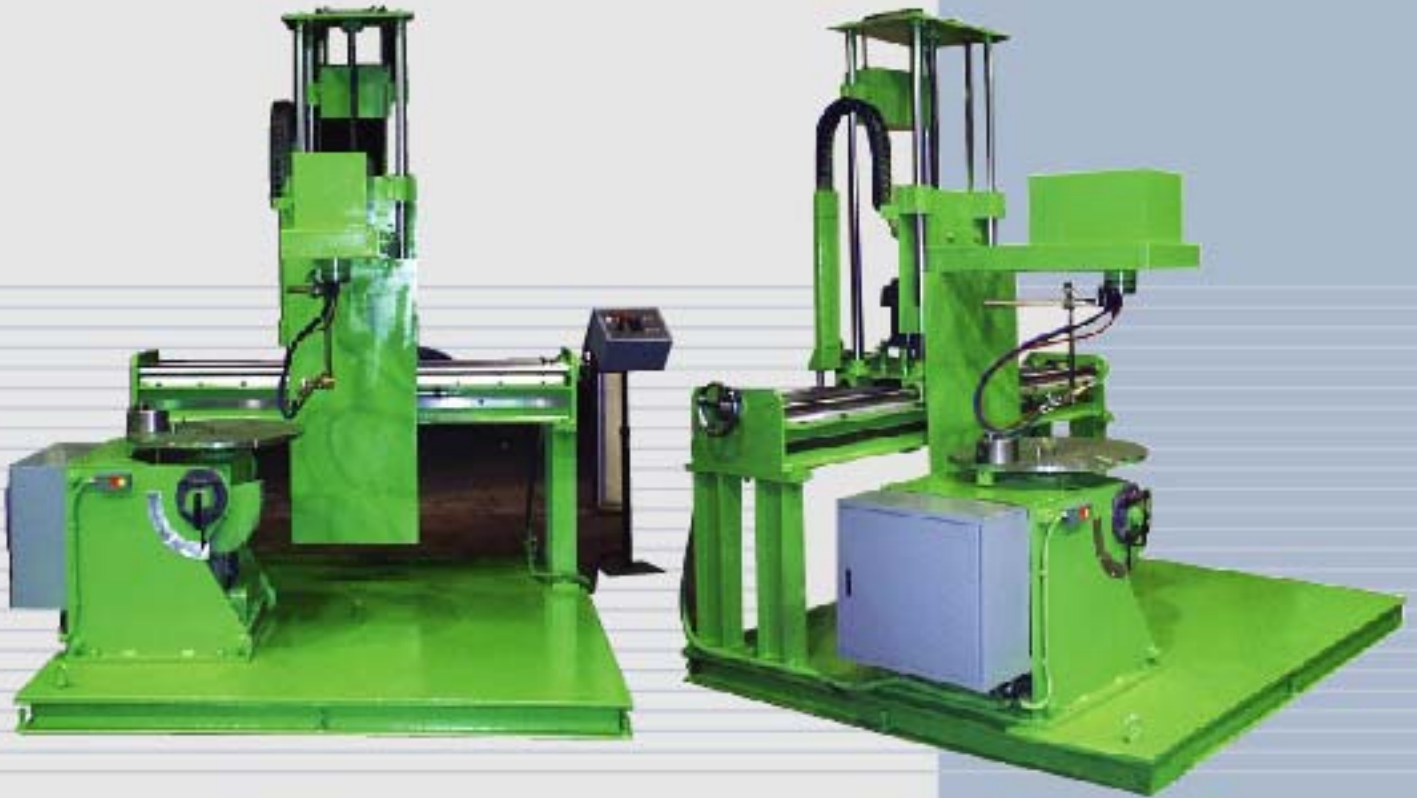


### ■ PIPE GAS CUTTING M/C

ITEM	SPECIFICATION
	NS-800C(일반형)
LOAD PIPE	80A~800A (6000L)
CUTTING PROCESS	OXYGEN & PLASMA
토치이송 TYPE	주행(수동식 조정) 상하(전동 수동식)
PIPE ROTATION TYPE	POLLER TURNING 인버터 조정
PIPE UP-DOWN	없음

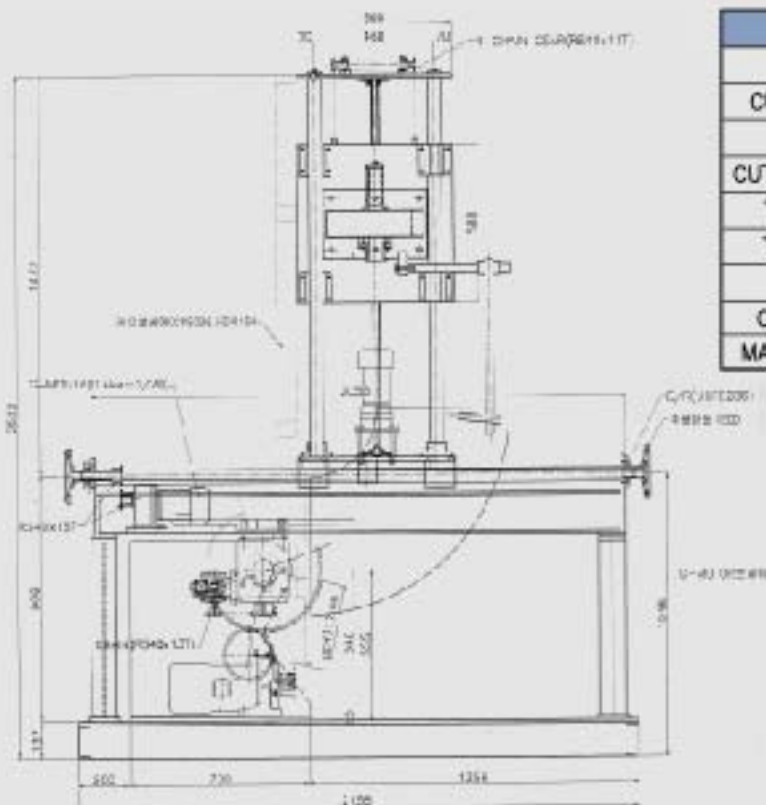


# ELBOW CUTTING M/C



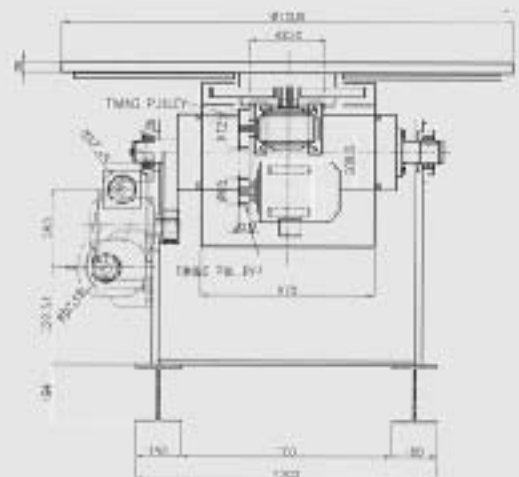
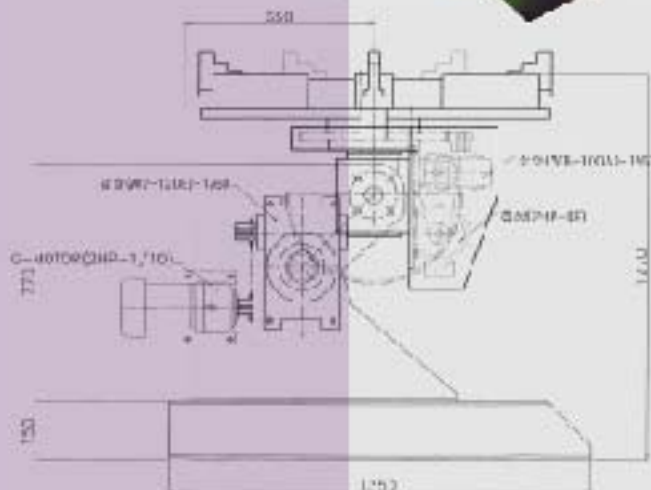
## ■ ELBOW CUTTING M/C

ITEM	SPECIFICATION
LOAD ELBOW	100A~600A
CUTTING PROCESS	OXYGEN
CUTTING TYPE	TORCH TURNING CUTTING(SPEED가변조정)
CUTTING BEVELLING	전동식수동 각도조절 & 전자제어 조절방식
TLTING ANGLE	0° ~ 90°
TURING SPEED	0~2RPM
TORCH 이동	전동식 구동식 및 수동핸들식(겸용)
CONTROL SYSTEM	MAIN P/L & OPERATION P/L
MACHINE DIMENSION	W1980×L2150×H2550





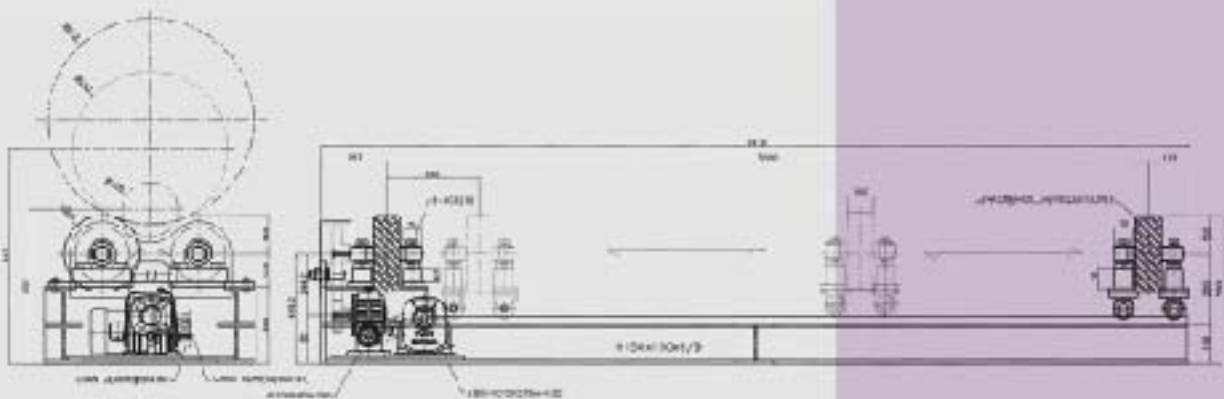
# POSITIONER



## ■ POSITIONER

ITEM	SPECIFICATION		
	NS-350	NS-600	NS-1000
LOAD PIPE	50A~350A	100A~600A	200A~1000A
CAPACITY	400kg	600kg	1000kg
TILTING ANGLE	0° ~ 120°		
ROTATION	360° (인버터 조정)		
CONTROL SYSTEM	MAIN P/C & 조작 S/W BOX		
MACHINE DIMENTION	W700×L1000×H980	W1000×L1350×H1270	W1100×L1460×H1320

# TURNING M/C



## ■ TURNING M/C

ITEM	SPECIFICATION		
	NS-3T	NS-20T	NS-50T
LOADING C/P	MAX 3,000kg	MAX 20,000kg	MAX 50,000kg
TURNING	±360° (인버터 조정)		
ROLLER 간격조정	SCREW 이송 & PIN 이송 고정형		
ROLL SIZE	Ø300×100W	Ø450×300W	Ø500×450W
TURNING MOTOR	0.75kw	2.2kw	3.7kw
WELDING SPEED	0.3~1.8RPM		
ELECTRIC POWER	220V/380V×3P×60HZ		